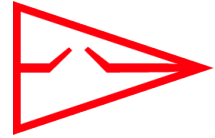




**2019 Annapolis Labor Day Regatta
August 31 - September 1, 2019**

CBYRA Sanction #349, 350
Co-Organizing Authority (OA):
Annapolis Yacht Club and Eastport Yacht Club
Annapolis, Maryland, USA

Website: <https://yachtscoring.com/emenu.cfm?eID=9433>



Sailing Instructions with Amendments 1 and 2

In the following pages, please find the following:

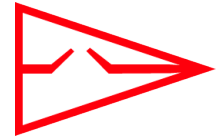
- Sailing Instructions for the Pursuit Fixed Marks Race with Amendment 2
- Sailing Instructions for the Drop Marks Races with Amendment 1



2019 Annapolis Labor Day Regatta

Co-Organizing Authority (OA):
Annapolis Yacht Club and Eastport Yacht Club
Annapolis, Maryland, USA

Website: <https://yachtscoring.com/emenu.cfm?eID=9433>



SAILING INSTRUCTIONS for the PURSUIT FIXED MARKS RACE (with Am2) Saturday, August 31, 2019

The notation '[DP]' in a rule in the sailing instructions (SIs) or notice of race (NoR) means that the penalty for a breach of that rule may, at the discretion of the protest committee, be less than disqualification. The notation '[NP]' in a rule of the SIs or NoR means that a boat may not protest another boat for breaking that rule. This changes RRS 60.1(a).

1 RULES

1.1 The regatta will be governed by the rules as defined in The Racing Rules of Sailing (RRS).

2 COMMUNICATIONS WITH COMPETITORS

2.1 Notices to competitors will be posted on the official notice board at:

<https://yachtscoring.com/emenu.cfm?eID=9433>

2.2 The race office is located at the western end of the 3rd floor of the AYC Sailing Center, and can be reached by telephone at 410-858-4964 or by email at raceoffice@annapolisyc.org. Forms can be found at the race office or online at <https://annapolisyc.com/racing/raceoffice>.

2.3 On the water, the race committee intends to monitor and communicate with competitors via VHF radio on channel 73. This includes courtesy announcements and confirmation of race committee signals before, during, and after racing.

3 CHANGES TO SAILING INSTRUCTIONS

3.1 Any change to the SIs will be posted no later than two (2) hours before the first scheduled warning signal on the day it will take effect, except that any change to the schedule of races will be posted by 2000 on the day before it will take effect.

4 SIGNALS MADE ASHORE

4.1 No signals will be made ashore. Notices will be posted on the official notice board.

5 SCHEDULE OF RACES

5.1 The scheduled time of the warning signal for the race is 1100.

5.2 A total of one (1) pursuit race is scheduled on Saturday, August 31. Races not completed will not be re-sailed.

5.3 No warning signal will be made after 1600.

5.4 On Saturday, all competitors and families are invited to a post-race party at the AYC Sailing Center. Awards for the ALDR Cruising and CHESSS classes will be presented.

5.5 On Sunday, all competitors and families are invited to the awards party at EYC.

6 CLASS FLAGS

6.1 The class flags are:

PHRF A0/A1	Numeral Pennant 9		PHRF N	Numeral Pennant 5	
PHRF A2	Numeral Pennant 2		Cal 25	Flag T	
PHRF B	Numeral Pennant 6		CHESSS	3 rd Substitute	
PHRF C	Numeral Pennant 7		ALDR Cruising	White Flag	

6.2 A boat shall clearly display two class flags - one at the bow and one at the stern.

7 RACING AREA

7.1 The racing area will be the Chesapeake Bay off the mouth of the Severn River.

8 THE COURSES

8.1 The possible courses including the mark order, and rounding sides are shown in SI Attachment 1.

8.2 The course to be sailed will be posted on the event web site by 2000 on Friday, August 30.

9 MARKS

9.1 Marks are shown in SI Attachment 1.

9.2 A race committee starting or finishing vessel may set a stand-off buoy. When present, this stand-off buoy, the line attaching it to the race committee vessel, and the race committee vessel are all part of the starting or finishing mark.

10 THE START

10.1 This shall be a pursuit race with a reverse PHRF handicap starting order. The boat with the slowest rating shall start first and the boat with the fastest rating shall start last. The scheduled start times for all boats will be posted on the event web site by 2000 on Friday, August 30.

10.2 The race committee will signal the starting sequence as follows (this changes RRS 26):

TIME	SIGNAL	FLAG / SOUND
1100	Warning signal for all boats	Raise large EYC Burgee with one (1) sound
1101	Preparatory signal for the first boat to start	Raise code flag "P" with one (1) sound
1104		Lower code flag "P" with a long sound
1105	Starting signal for the first boat to start	Lower large EYC Burgee and briefly raise numeral pennant 8 with one (1) sound
each subsequent start time	Starting signal for remaining boats	Briefly raise numeral pennant 8 with one (1) sound

10.3 For the purposes of the definition of "racing," each boat's preparatory signal shall be four (4) minutes prior to their scheduled start.

10.4 The start times for all boats shall be based on their PHRF Time on Distance Circular Random (CR) handicap rating, provided all CR ratings are verified by PHRF of the Chesapeake by 0600 hours in Friday, August 30. The race shall use GPS time synchronization. The race committee will attempt to broadcast a five (5) second countdown for each starting time on VHF channel 73. A boat may not base a request for redress on the failure of the race committee to announce a start time (this changes RRS 60.1(b)).

10.5 The start line shall be between a staff displaying an orange flag on the RC signal vessel and the course side of "G 5."

10.6 After the warning signal for the first start, boats shall stay clear of the starting area until four (4) minutes before their scheduled starting time.

10.7 In the event a postponement is signaled on the water, the RC shall announce the revised start times before lowering the postponement flag.

11 RECALLS

11.1 If any part of a boat's hull, crew or equipment is on the course side of the starting line at her starting signal and she is identified, she shall be OCS. [DP] She shall not attempt to clear herself or restart. The race committee will attempt to broadcast her sail number on VHF channel 73. Flag X will not be used. This changes RRS 29.1.

11.2 A boat that is OCS shall, without a hearing, be penalized by having ten (10) minutes plus the amount of time that she was over early added to her elapsed time. For the purposes of RRS 28, A4, and A5, a boat so penalized has started properly. This changes RRS 28, 63.1, A4, and A5.

12 THE FINISH

12.1 The finishing line will be between a staff or halyard displaying a blue flag on the race committee finishing vessel and the course side of the finishing mark.

13 PENALTY SYSTEM

13.1 Penalties while racing: RRS/US Appendix V1, Penalty at the Time of an Incident, will apply.

13.2 Penalties after racing: RRS/US Appendix V2, Penalty Taken After the Race, will apply.

14 TIME LIMITS

14.1 The time limit is 4 and 1/2 hours.

15 PROTESTS, REQUESTS FOR REDRESS, SCORING INQUIRIES

15.1 Protest forms, scoring inquiry forms, and penalty acceptance forms shall be delivered to the race office (see SI 2.2).

15.2 Protests, requests for redress or reopening shall be delivered to the race office by the protest time limit.

15.3 When the race committee receives a scoring inquiry form, it will review its records and respond as soon as practicable.

15.4 The protest time limit is 60 minutes after the race committee signal vessel docks. The race committee will post the protest time limit.

15.5 The race committee will post a list of race committee scoring actions no later than the protest time limit.

15.6 Notices of protests by the race committee or protest committee will be posted to inform boats under RRS 61.1(b).

15.7 As soon as practicable after the protest time limit, the protest committee will post a notice to inform competitors of the schedule and location of hearings in which they are parties or named as witnesses.

16 SCORING

16.1 RRS Appendix A4, Low Point System, will apply.

16.2 A boat's race score will be order of finish based on her corrected time. If the race is not shortened, a boat's corrected time will be their elapsed time. If the race is shortened, a boat's race score will be based on her corrected time based on the actual distance sailed.

16.3 For the CHESSS and ALDR Cruising class, a boat's series score is her score in the pursuit race.

16.4 For Cal 25 and PHRF classes, a boat's series score will include her race scores in the pursuit race and in the drop marks races on Sunday. See the SIs for the drop marks races for additional scoring details.

17 SAFETY REGULATIONS

17.1 [DP] A boat that retires from a race, or leaves the racing area between races, shall notify the race committee or the race office at the first reasonable opportunity.

17.2 [NP] [DP] A boat shall not exercise right of way, cross in proximity to, or interfere with reasonable transit of the race area by commercial ships, tugs, or barges. Boats must take evasive action well in advance of a potentially dangerous situation. The US Coast Guard, ship captains, and bay pilots have been encouraged to report any incident they observe.

17.3 A boat without way may use any means of propulsion to avoid commercial traffic that is under way provided: (a) the boat does not gain an advantage; (b) use of the propulsion is the boat's only means of avoiding the commercial traffic; and (c) the boat submits a report to the race office by the protest time limit describing the incident and the boat's actions.

17.4 The race committee or protest committee may protest a boat for SI 17.2 based on information received from any source. The protest time limit does not apply. A report from the US Coast Guard, a ship captain, or a bay pilot will be accepted as evidence without the author present. This changes RRS 60.2, 60.3, 61.3, and 63.6.

18 PRIZES

18.1 1st, 2nd, and 3rd place trophies in the pursuit race will be awarded in the ALDR Cruising and CHESSS classes on Saturday. Overall 1st, 2nd, and 3rd place trophies in the series will be awarded to all other classes on Sunday.

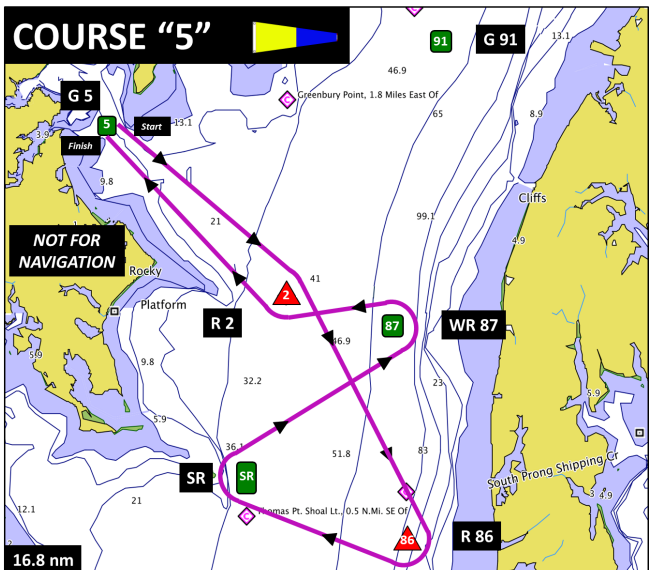
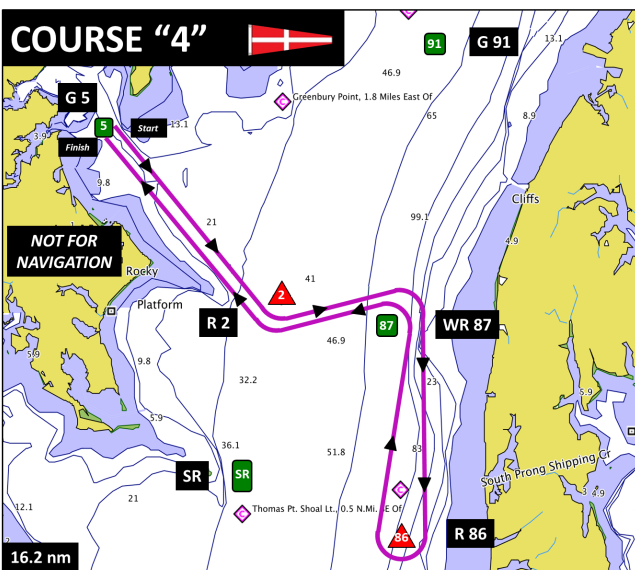
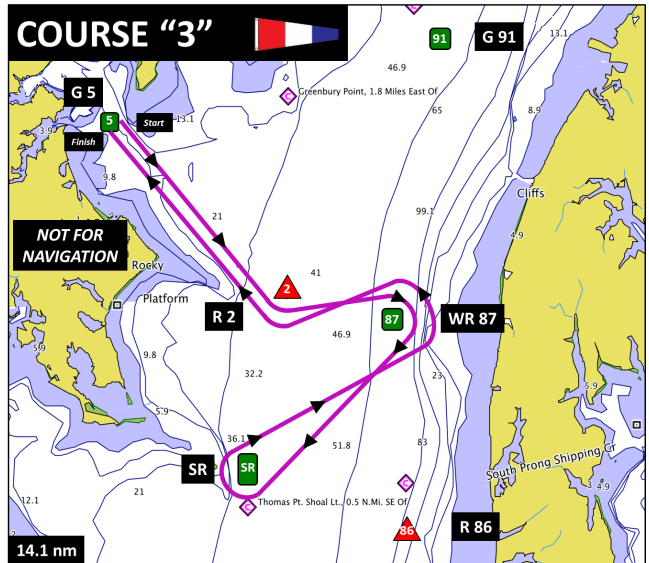
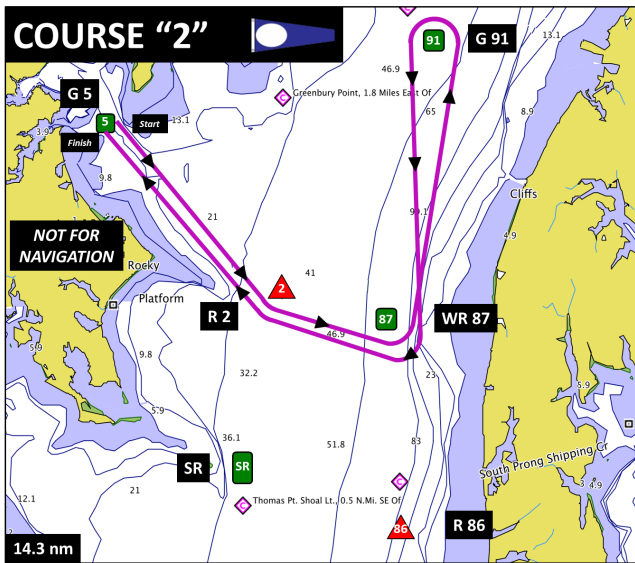
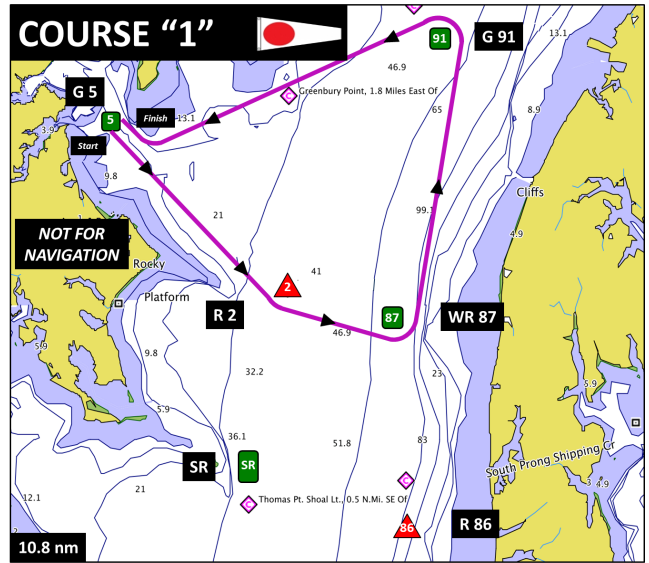
19 DISCLAIMER OF LIABILITY

19.1 Competitors participate in the regatta entirely at their own risk. See RRS 4. The organizing authority will not accept any liability for material damage or personal injury or death sustained in conjunction with or prior to, during, or after the regatta.

SI ATTACHMENT 1 - COURSES

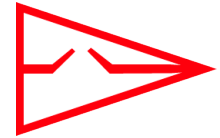
CHART DESIGNATION	LIGHT	APPROXIMATE LOCATION
G 5 (Start/Finish)	Fl G, 4.0s	N 38° 58.30' W 076° 26.72'
R2	Fl R, 2.5s	N 38° 56.50' W 076° 25.56'
WR 87	Q G	N 38° 55.97' W 076° 23.55'
G 91	Fl G, 4.0s	N 38° 58.99' W 076° 23.28'
R 86	Fl R, 4.0s	N 38° 51.97' W 076° 25.55'
SR	none	N 38° 53.66' W 076° 25.87'

The following marks shall be passed on the channel side at all times: Severn River Dolphin ("AN"), Tolly Point Dolphin ("1AH"), Thomas Pt. Light, and Bloody Pt. Warning Light (LLNR 7751).





2019 Annapolis Labor Day Regatta
 Co-Organizing Authority (OA):
 Annapolis Yacht Club and Eastport Yacht Club
 Annapolis, Maryland, USA
<https://yachtscoring.com/emenu.cfm?eID=9433>



SAILING INSTRUCTIONS for the DROP MARKS RACES (with Am1)
 Saturday, August 31- Sunday, September 1, 2019

The notation '[DP]' in a rule in the sailing instructions (SIs) or notice of race (NoR) means that the penalty for a breach of that rule may, at the discretion of the protest committee, be less than disqualification. The notation '[NP]' in a rule of the SIs or NoR means that a boat may not protest another boat for breaking that rule. This changes RRS 60.1(a).

1 RULES

1.1 The regatta will be governed by the rules as defined in The Racing Rules of Sailing (RRS).

2 COMMUNICATIONS WITH COMPETITORS

2.1 Notices to competitors will be posted on the official notice board at:
<https://yachtscoring.com/emenu.cfm?eID=9433>

2.2 The race office at Annapolis Yacht Club is located at the western end of the 3rd floor of the AYC Sailing Center and at Eastport Yacht Club is on the ground floor of the EYC Clubhouse. The race office can be reached by telephone at 410-858-4964 or by email at raceoffice@annapolisyc.org. Forms can be found at the race office or online at <https://annapolisyc.com/racing/raceoffice>.

2.3 On the water, the race committee intends to monitor and communicate with competitors via VHF radio. The channel is shown in SI Attachment 1. This includes courtesy announcements and confirmation of race committee signals before, during, and after racing.

3 CHANGES TO SAILING INSTRUCTIONS

3.1 Any change to the SIs will be posted no later than two (2) hours before the first scheduled warning signal on the day it will take effect, except that any change to the schedule of races will be posted by 2000 on the day before it will take effect.

4 SIGNALS MADE ASHORE

4.1 No signals will be made ashore. Notices will be posted on the official notice board.

5 SCHEDULE OF RACES

5.1 The event schedule will be:

Date	Time	
Saturday, August 31	1100	First warning signal of the day
	1700 - 2030	All-Racers Party at Annapolis Yacht Club for families and friends
Sunday, September 1	1100	First warning signal of the day
	1600	No warning signal will be made after this time
	1700 - 2030	Awards Party at Eastport Yacht Club for families and friends

5.2 Four (4) races are scheduled for the PHRF A0/A1, PHRF A2, PHRF B, PHRF C, PHRF N, and the Cal 25 classes, including the Pursuit Race (see separate SI for the Pursuit Race).

5.3 Six (6) races are scheduled for the J/22, J/70, J/80, J/30, J/35, J/105, and V-Boats classes.

6 CLASS FLAGS

6.1 The class flags will be:

PHRF A0/A1	9		PHRF N	5		J/22	7		J/70	6	
PHRF A2	2		Cal 25	T		J/30	D		J/80	J	
PHRF B	6		V-Boats	1		J/35	K		J/105	V	
PHRF C	7										

6.2 For **PHRF** classes only, a boat shall clearly display two class flags - one at the bow and one at the stern.

7 RACING AREA

7.1 The racing area will be the Chesapeake Bay off the mouth of the Severn River as shown in SI Attachment 2.

7.2 No later than two (2) hours prior to the first scheduled warning signal, the race committee will post the approximate intended location of the starting area on the official notice board.

8 THE COURSES

8.1 The courses are shown in SI Attachment 3.

8.2 No later than the warning signal, the race committee signal vessel will display the course to be sailed, the approximate distance between the leeward and windward marks, and the approximate compass bearing of the first leg of the course.

8.3 If the race committee signal vessel displays flag C before the warning signal, accompanied by a series of repetitive sounds, the first mark of the course will be a change mark.

9 MARKS

9.1 The mark descriptions are shown in SI Attachment 1.

9.2 A race committee starting or finishing vessel may set a stand-off buoy. When present, this stand-off buoy, the line attaching it to the race committee vessel, and the race committee vessel are all part of the starting or finishing mark.

10 THE START

10.1 No later than two (2) hours prior to the first scheduled warning signal, the race committee will post the starting order for the first race of the day on the notice board.

10.2 The starting line will be between the staff or halyard displaying an orange flag on the race committee signal vessel and either the course side of the starting inflatable mark or the staff or halyard displaying an orange flag on the race committee signal vessel at the other end.

10.3 [DP] Boats whose warning signal has not been made shall avoid the starting area during the starting sequence for other races.

10.4 A boat that does not start within 10 minutes after her starting signal will be scored Did Not Start without a hearing. This changes RRS A4 and A5.

11 RECALLS

The race committee will announce on VHF radio boats identified as OCS, UFD, or BFD. A boat may not base a request for redress on the failure to hear or receive the announcement, the timeliness of the announcement, or the order in which boats are announced. This changes RRS 62.1(a).

12 CHANGE OF THE NEXT LEG OF THE COURSE

12.1 To change the next leg of the course, the race committee will lay a new mark (or move the finishing line) and remove the original mark as soon as practicable. When in a subsequent change, a new mark is replaced, it will be replaced by an original mark.

12.2 After a start, if flag C is flown over flag Q, then the course change applies only to boats beginning their final leg to the finish. This changes RRS 33 and RRS Race Signals.

13 THE FINISH

13.1 The finishing line will be between a staff or halyard displaying a **BLUE** flag on the race committee finishing vessel and the course side of the finishing inflatable mark.

14 PENALTY SYSTEM

14.1 Penalties while racing: RRS/US Appendix V1, Penalty at the Time of an Incident, will apply.

14.2 Penalties after racing: RRS/US Appendix V2, Penalty Taken After the Race, will apply.

15 TIME LIMITS

15.1 In each class, the time limit is ninety (90) minutes.

15.2 For one-design classes only, boats failing to finish within thirty (30) minutes after the first boat in her class sails the course and finishes, and not subsequently retiring, penalized or given redress, will be scored Time Limit Expired (TLE) without a hearing. This changes RRS 35, A4, A5, and A11.

16 PROTESTS, REQUESTS FOR REDRESS, SCORING INQUIRIES

16.1 Protest forms, scoring inquiry forms, and penalty acceptance forms shall be delivered to the race office (see SI 2.2).

- 16.2 Protests, requests for redress or reopening shall be delivered to the race office by the protest time limit.
- 16.3 When the race committee receives a scoring inquiry form, it will review its records and respond as soon as practicable.
- 16.4 The protest time limit is 60 minutes after the race committee signal vessel docks. The race committee will post the protest time limit.
- 16.5 The race committee will post a list of race committee scoring actions no later than the protest time limit.
- 16.6 Notices of protests by the race committee or protest committee will be posted to inform boats under RRS 61.1(b).
- 16.7 As soon as practicable after the protest time limit, the protest committee will post a notice to inform competitors of the schedule and location of hearings in which they are parties or named as witnesses.

17 SCORING

- 17.1 RRS Appendix A4, Low Point System, will apply.
- 17.2 One race is required to be completed to constitute a series.
- 17.3 A boat's series score will be the total of her race scores. For classes racing the pursuit race on Saturday, their series score will include both their race score in the pursuit race and their scores in the drop marks races.
- 17.4 Corrected times for classes using PHRF will be calculated using PHRF Time-on-Time scoring with a boat's Windward-Leeward rating.
- 17.5 Boats to be scored TLE will be scored points equal to the number of boats finishing within the finishing window plus two points by the race committee without a hearing but no worse than the number of entries. This changes RRS A4.2 and A5.

18 SAFETY REGULATIONS

- 18.1 [DP] A boat that retires from a race, or leaves the racing area between races, shall notify the race committee or the race office at the first reasonable opportunity.
- 18.2 [NP] [DP] A boat shall not exercise right of way, cross in proximity to, or interfere with reasonable transit of the race area by commercial ships, tugs, or barges. Boats must take evasive action well in advance of a potentially dangerous situation. The US Coast Guard, ship captains, and bay pilots have been encouraged to report any incident they observe.
- 18.3 A boat without way may use any means of propulsion to avoid commercial traffic that is under way provided: (a) the boat does not gain an advantage; (b) use of the propulsion is the boat's only means of avoiding the commercial traffic; and (c) the boat submits a report to the race office by the protest time limit describing the incident and the boat's actions.
- 18.4 The race committee or protest committee may protest a boat for SI 18.2 based on information received from any source. The protest time limit does not apply. A report from the US Coast Guard, a ship captain, or a bay pilot will be accepted as evidence without the author present. This changes RRS 60.2, 60.3, 61.3, and 63.6.

19 PRIZES

- 19.1 Prizes for 1st, 2nd and 3rd place in the series will be awarded to each class on Sunday.
- 19.2 Perpetual trophies, including the City of Annapolis Trophy, the SpinSheet Varsity and Junior Varsity Sailing Trophies, and the Eleanor Ruth Wilcox Trophy will be awarded.
- 19.3 Additional prizes may be awarded at the discretion of the Organizing Authority.

20 DISCLAIMER OF LIABILITY

- 20.1 Competitors participate in the regatta entirely at their own risk; see RRS 4. The Organizing Authority will not accept any liability for material damage or personal injury or death sustained in conjunction with or prior to, during, or after the regatta.

SI ATTACHMENT 1 - DIVISION-SPECIFIC INFORMATION

DIVISION ASSIGNMENTS

The assignment of classes to divisions will be posted on the notice board by 1500 on Friday, August 30.

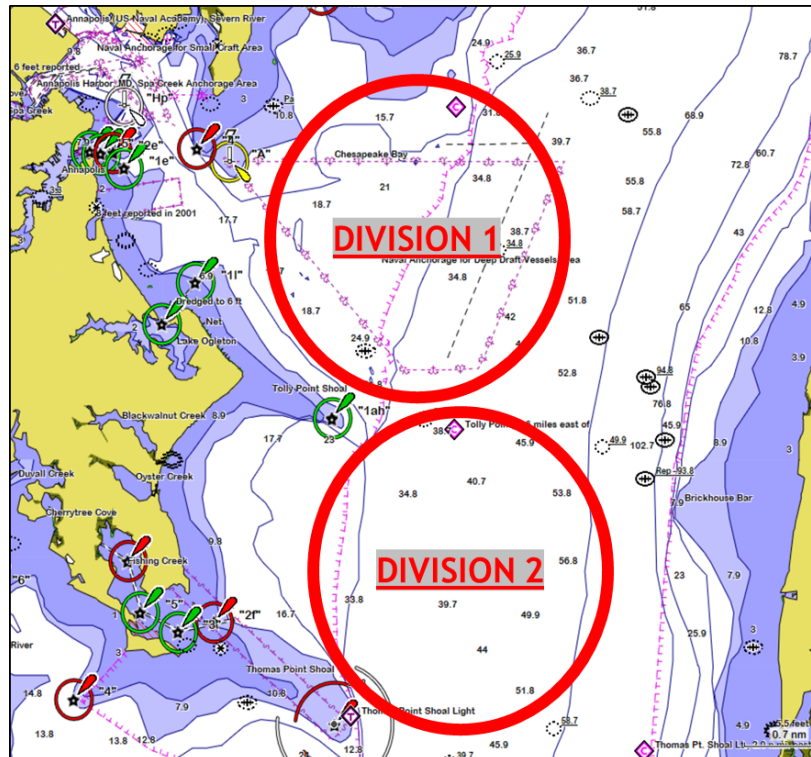
DIVISION 1 INFORMATION

VHF Channel	72
Marks	Start, Finish: short yellow cylinder 1, 2s, 2p: orange cylinder 1A, 3: lime cylinder 1 change: orange cylinder with a dark colored band 3 change: lime cylinder with a dark colored band

DIVISION 2 INFORMATION

VHF Channel	73
Marks	Start: green tetrahedron Finish: pink tetrahedron 1, 2s, 2p: orange cylinder 1A, 3: red cylinder 1 change: yellow tetrahedron 3 change: yellow tetrahedron

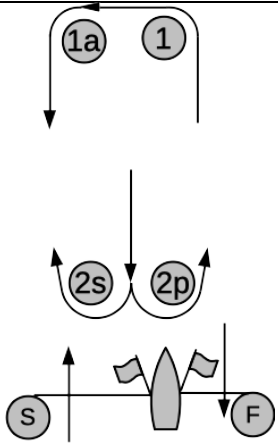
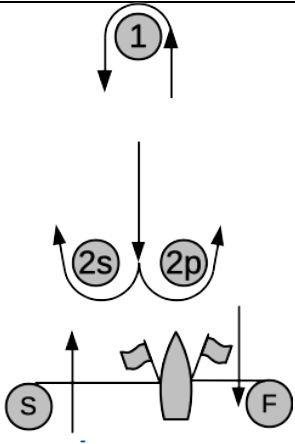
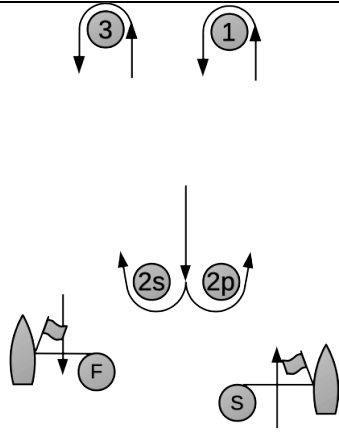
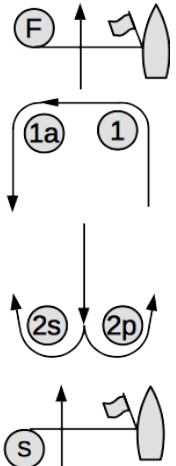
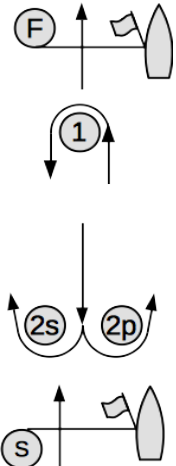
SI ATTACHMENT 2 - RACE AREA LOCATIONS



SI ATTACHMENT 3 - COURSES

In the below table, the course designation is followed by the mark rounding order for that course. All marks except 2S are to be rounded to port. The starting line is described in SI 10. The marks and finishing line will be described in the supplement. If the race committee displays "NO GATE" near the course designation, then mark 2S will not be set.

If there is only one mark at the leeward gate, that mark is 2p.

<p>LA</p>  <p>LA2: Start-1-1a-2s/2p-1-1a-Finish LA3: Start-1-1a-2s/2p-1-1a-2s/2p-1-1a-Finish</p>	<p>L</p>  <p>L2: Start-1-2s/2p-1-Finish L3: Start-1-2s/2p-1-2s/2p-1-Finish</p>	<p>M</p>  <p>M2: Start-1-2s/2p-3-Finish M3: Start-1-2s/2p-3-2s/2p-3-Finish</p>
<p>WA</p>  <p>WA2: Start-1-1a-2s/2p-Finish WA3: Start-1-1a-2s/2p-1-1a-2s/2p-Finish WA4: Start-1-1a-2s/2p-1-1a-2s/2p-1-1a-2s/2p-Finish</p>	<p>W</p>  <p>W2: Start-1-2s/2p-Finish W3: Start-1-2s/2p-1-2s/2p-Finish W4: Start-1-2s/2p-1-2s/2p-1-2s/2p-Finish</p>	<p></p>